

EDG-W

BY WESTERN LIGHTING

**EDGE LIT SIGN
EXIT, STAIRS OR FIRE ESCAPE
SURFACE WALL MOUNTED
LED OR FLUORESCENT
AC ONLY**

SPECIFICATIONS

HOUSING: Welded 20 gauge cold rolled steel is painted after fabrication. Lamps and ballasts are contained in this shallow 3 1/2" deep by 3 3/4" wide by 14 7/8" long housing. **STAINLESS STEEL ALSO AVAILABLE.** (See FINISH).

INSCRIPTION: Letters are a full 6" high x 3/4" stroke, deep engraved around the edges, screened on a 3/16" acrylic panel. The panel has polished edges for a clear crisp look. A divider plate is included for double panel signs. Arrows are full-length underneath inscription. Red letters on white **"-R/W"** for special inscriptions and graphics Consult factory **"-SG"**

LAMPS: **White LED array 4.5 Watt (Chicago Code) (5 year warranty)** **"-LED"**
Two F8T5 fluorescent lamps are included, each with a separate ballast. **"-FL"**

VOLTAGE: **Fluorescent** Available 120 or 277 volt input. Please specify "-120" or "-277". **(Dual voltage not available)**

FINISH: Standard finish is white **"-WH"**
Optional finishes are Black **"-BL"**
Bronze **"-BZ"**
Brushed Stainless Steel specify **"-SS"**
For special colors specify **"-S/P"** and consult the factory.

MOUNTING: 7/8" diameter knockouts are provided on top center and side center. Canopy for outlet box mounting is included.

OPTIONS: **For shallow** mounting specify "EDG-C" HOUSING WITH bent panel. **"-BP"**
"BP", reduces height by 2 3/4". see mounting details.
For inverted lettering **-INV"**

CODES: Complies with UL 924, NEC and NFPA 101 Life Safety Code.
Fire Prevention Bureau, City of Chicago.
ETL Listed

DIMENSIONS: Panel size is as follows:

	EXIT or STAIRS	FIRE ESCAPE
Height, no arrows	6 7/8"	6-7/8"
Height with arrows	8 3/4"	8-3/4"
Width	13 5/8"	23"

ORDERING CODE

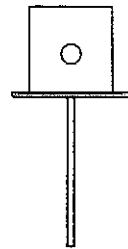
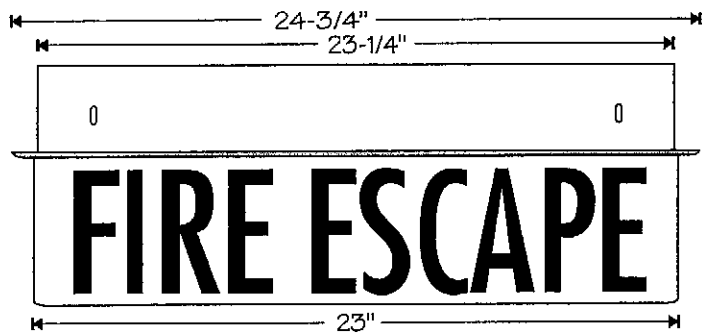
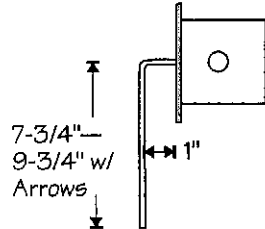
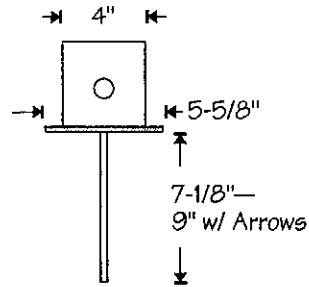
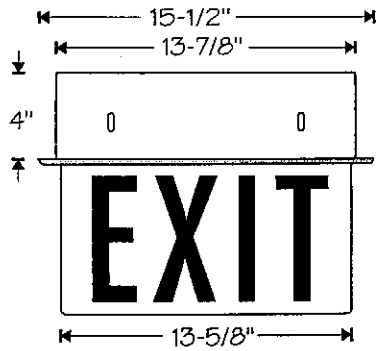
SERIES	INSCRIPTIONS	LAMP	VOLT	FINISH	OPTIONS			
EDG-W	+	+	+	+	+			
W (WALL SURFACE MOUNTED)	SEE BELOW (*CODE)-R/W SG	LED FL	120 277	WH BL BZ SS S/P	BP INV			
CODE INSCRIPTIONS	SINGLE FACE				DOUBLE FACE			
	NO ARROW	ARROW RIGHT	ARROW LEFT	DOUBLE HEADED ARROW	NO ARROW	ARROW RIGHT	ARROW LEFT &RIGHT	DOUBLE HEADED ARROW
EXIT	3	6	9	12	18	21	21	24
STAIRS	2	5	8	11	17	20	20	23
FIRE ESCAPE	1	4	7	10	16	19	19	22



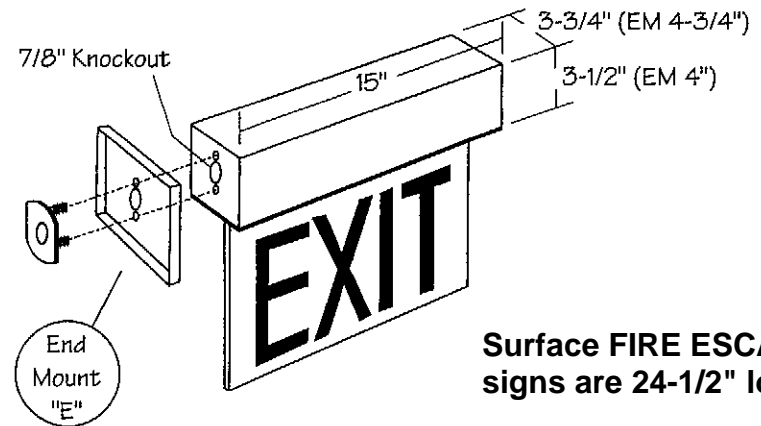
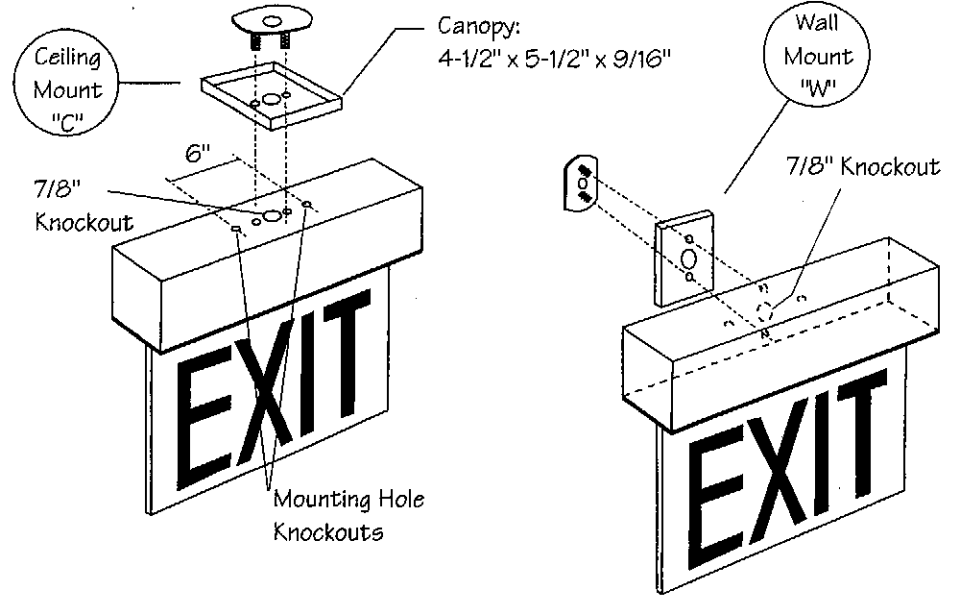
WESTERN LIGHTING, INC.
2349 N. 17th Ave. • Franklin Park, IL 60131-3432
(847) 451-7200 • Fax: (847) 451-7275



Recessed



Surface



Surface FIRE ESCAPE signs are 24-1/2" long

Drawing #: EDG1.2	Date: 10-17-00	Revised: 4/6/16	Scale: NTS
----------------------	-------------------	--------------------	---------------

EDG Series Exit Fixture Dimensions



WESTERN LIGHTING, INC.
2349 N. 17th Ave. Franklin Park, IL 60131
(847)451-7200 • Fax (847)451-7275

